

SCOPE OF WORK – RIFLE RANGE

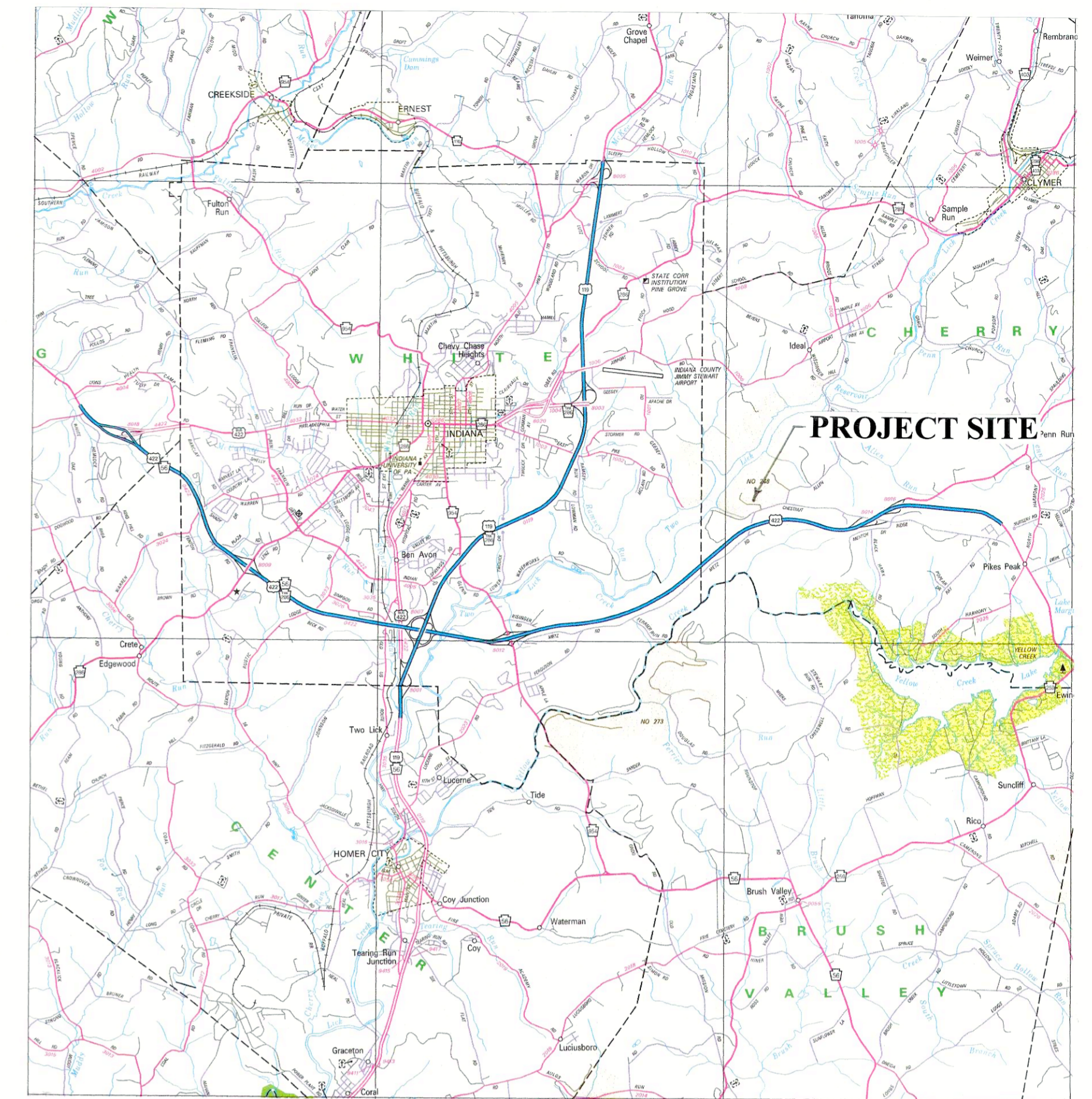
1. Refer to the Site Plan on Drawing 2 for a layout of the rifle range.
2. Demolish and remove the existing steel target uprights.
3. Remove the pipe frame tables from the concrete slabs at the shooting line. Give the table frames to the PGC at the site. Break apart and remove the existing concrete slabs under the tables.
4. Strip the sod/soil from the areas where the new shooting station shelter, stone path and target lines are to be constructed.
5. Construct the new 32-foot long shooting station shelter at the rifle range.
6. Reconstruct the stone backstop behind the 100-yard target line.
7. Install new steel target uprights at the 25-yard, 50-yard and 100-yard target lines. Place stone around each target line.
8. Construct the stone path from the shooting station shelter to the target lines.
9. Construct the concrete sidewalk and stone path from the parking area to the shooting station shelter.
10. Seed and mulch disturbed areas.
11. Perform final site clean-up.

SCOPE OF WORK – PISTOL RANGE

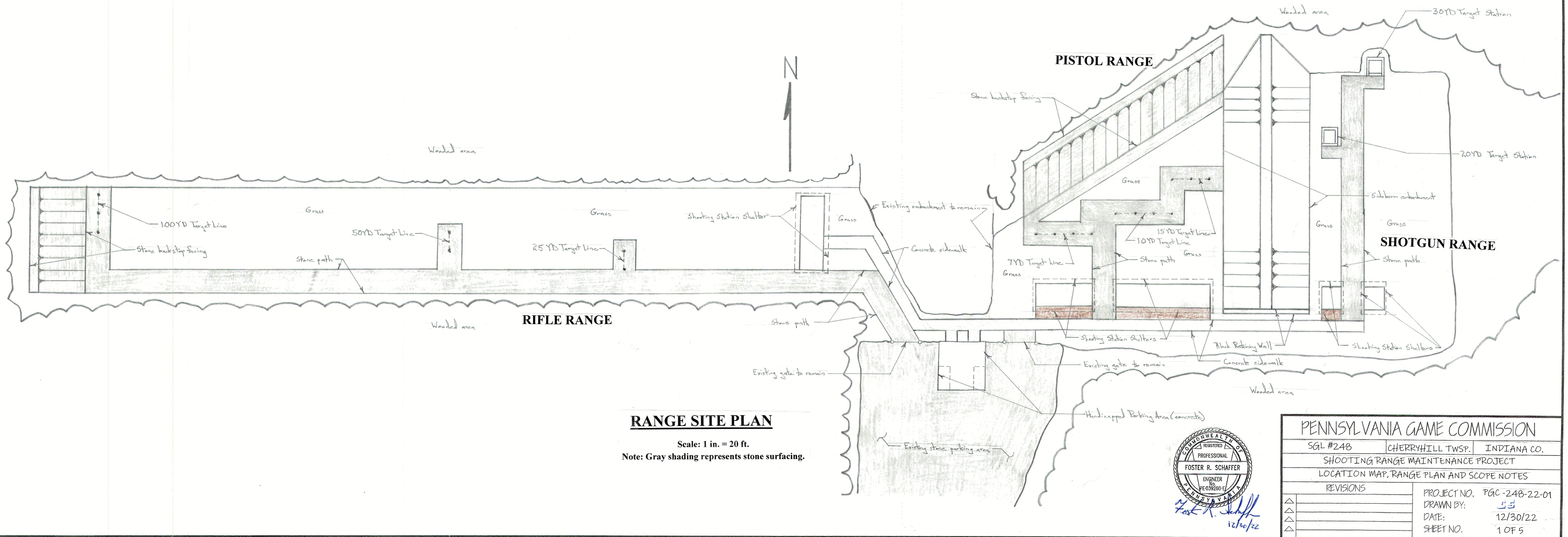
1. Refer to the Site Plan on Drawing 3 for a layout of the pistol range.
2. Cut and remove woody vegetation from the backstop slope.
3. Place stone on the backstop slope.
4. Strip the sod/soil from the area where the new shooting station shelters, stone paths and target lines are to be constructed.
5. Construct the new 24-foot long shooting station shelter and new 40-foot long shooting station shelter.
6. Construct the concrete slabs for the new shooting station shelters.
7. Install new steel uprights at the 7-yard, 10-yard and 15-yard target lines. Place stone around the target lines.
8. Construct the stone path from the shooting station shelters to the target lines.
9. Construct the handicapped parking spots. Construct the concrete sidewalk from the parking area to the shooting station shelters.
10. Construct the sideberr embankment between the pistol range and shotgun range.
11. Seed and mulch disturbed areas.
12. Perform final site clean-up.

SCOPE OF WORK – SHOTGUN RANGE

1. Refer to the Site Plan on Drawing 3 for a layout of the shotgun range.
2. Demolish and remove the existing shooting shelves including the concrete foundations. Backfill voids with #2A coarse aggregate.
3. Demolish and remove the existing steel target uprights.
4. Strip the sod/soil from the area where the new shooting station shelters, stone paths and target lines are to be constructed.
5. Construct the new 8-foot long shooting station shelters.
6. Construct the concrete slab for the new shooting station shelters.
7. Construct the concrete slabs for the shotgun target stations.
8. Construct the stone path from the shooting station shelters to the shotgun pattern stations.
9. Install the shotgun target stations (2).
10. Continue the concrete sidewalk from the pistol range to the shooting station shelters at the shotgun range.
11. Seed and mulch disturbed areas.
12. Perform final site clean-up.



LOCATION MAP



RANGE SITE PLAN

Scale: 1 in. = 20 ft.
Note: Gray shading represents stone surfacing.



PENNSYLVANIA GAME COMMISSION		
SGL #248	CHERRYHILL TWP.	INDIANA CO.
SHOOTING RANGE MAINTENANCE PROJECT		
LOCATION MAP, RANGE PLAN AND SCOPE NOTES		
REVISIONS		
PROJECT NO.	PGC-248-22-01	
DRAWN BY:	JS	
DATE:	12/30/22	
SHEET NO.	1 OF 5	